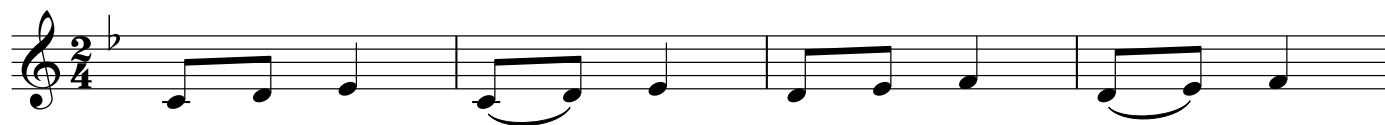
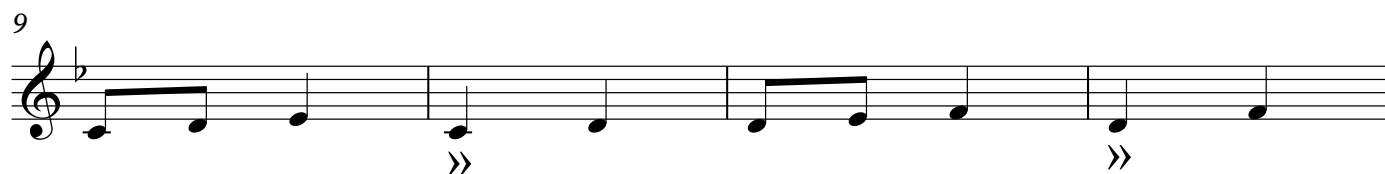


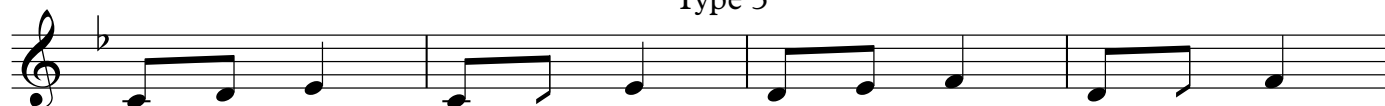
Types of etesal



Type 2



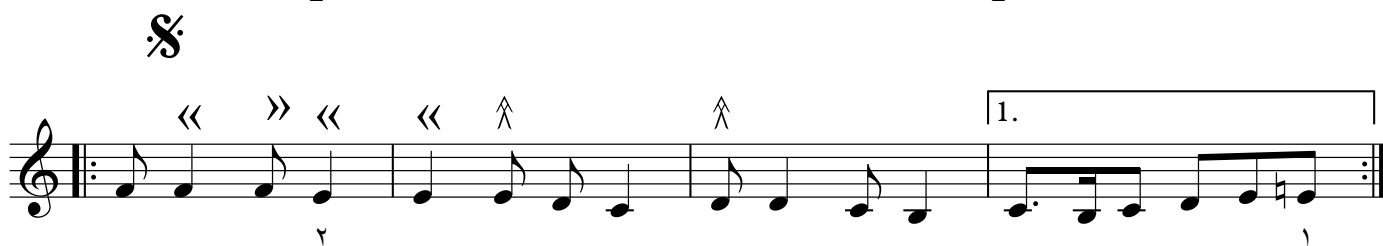
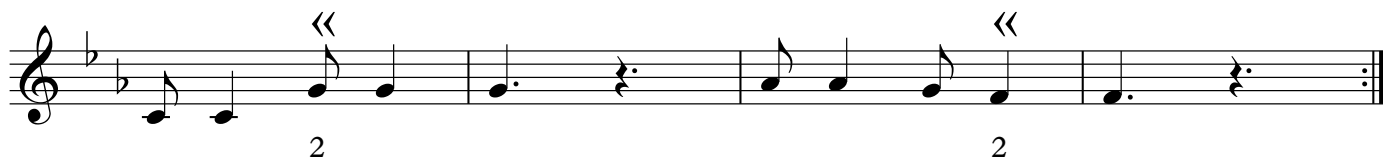
Type 3



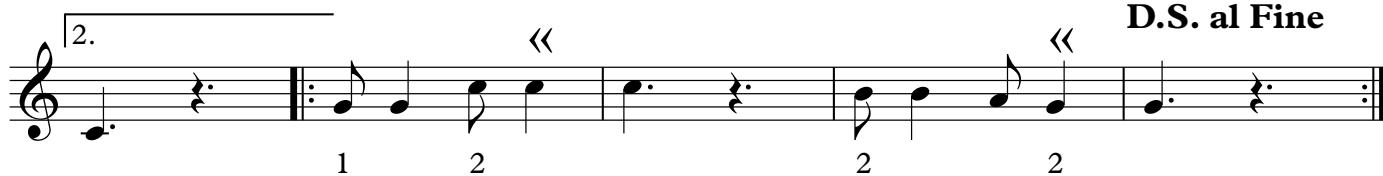
Etesal tarkibi



Etesal . Shekar Ahoo



Fine



D.S. al Fine

Riz Chap Etesal

3

simile.

This block contains the first two staves of the piece 'Riz Chap Etesal'. The first staff has four measures, and the second staff has four measures. Above the first staff, the letters 'V', 'T', 'V', 'T', 'V' are placed above the first, third, and fifth notes of each measure respectively. The word 'simile.' is written below the third measure of the first staff. The second staff ends with a double bar line and repeat dots.

Etesal Ba Riz Va Chap

This block contains the next four staves of the piece 'Etesal Ba Riz Va Chap', totaling 16 measures. The notation includes various musical symbols such as slurs, ties, and dynamic markings. Above the first staff, the letters 'T', 'V', 'V', 'T', 'V', 'V', 'T', 'V', 'Λ', 'V', 'Λ', 'V', 'Λ', 'V' are placed above specific notes. Below the first staff, the letter 'r' is written under the third measure. Below the second staff, the letter 'r' is written under the second measure. Below the third staff, the letters '1' and 'r' are written under the fourth and fifth measures respectively. Below the fourth staff, the letters '1', '1', '2', '2', 'r' are written under the first five notes. The piece concludes with a double bar line and repeat dots in the final measure of the fourth staff.

Rast riz Eshareh

4

میزان ناقص

ضدضرب

1 2

1 2

T

D.C.